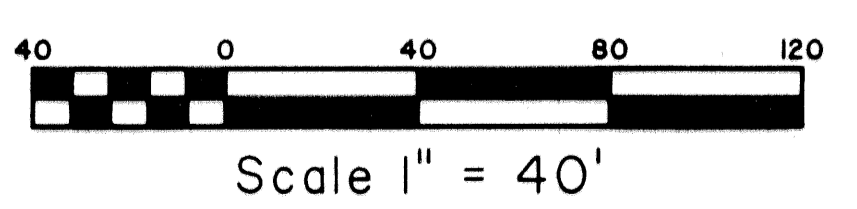
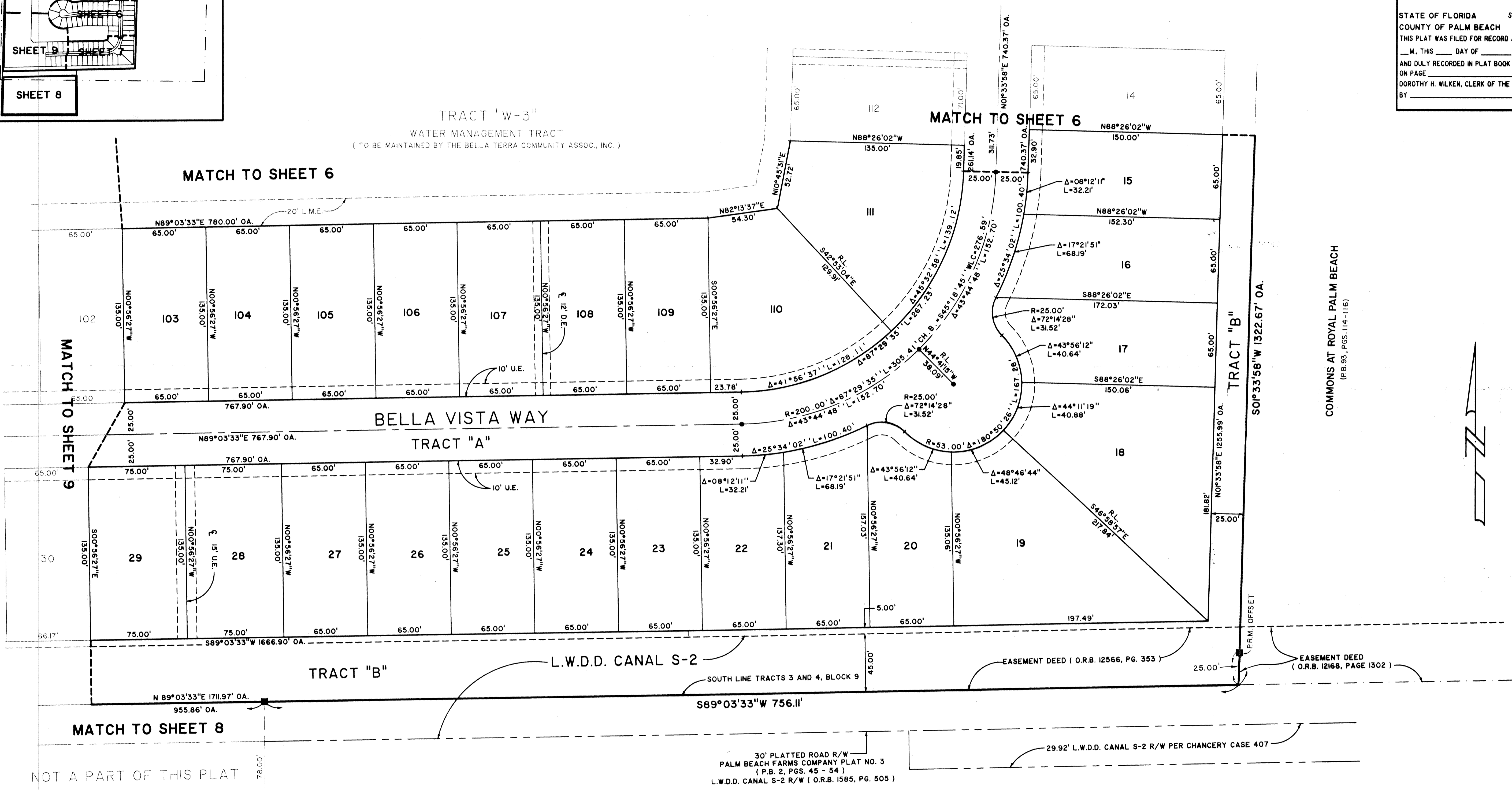
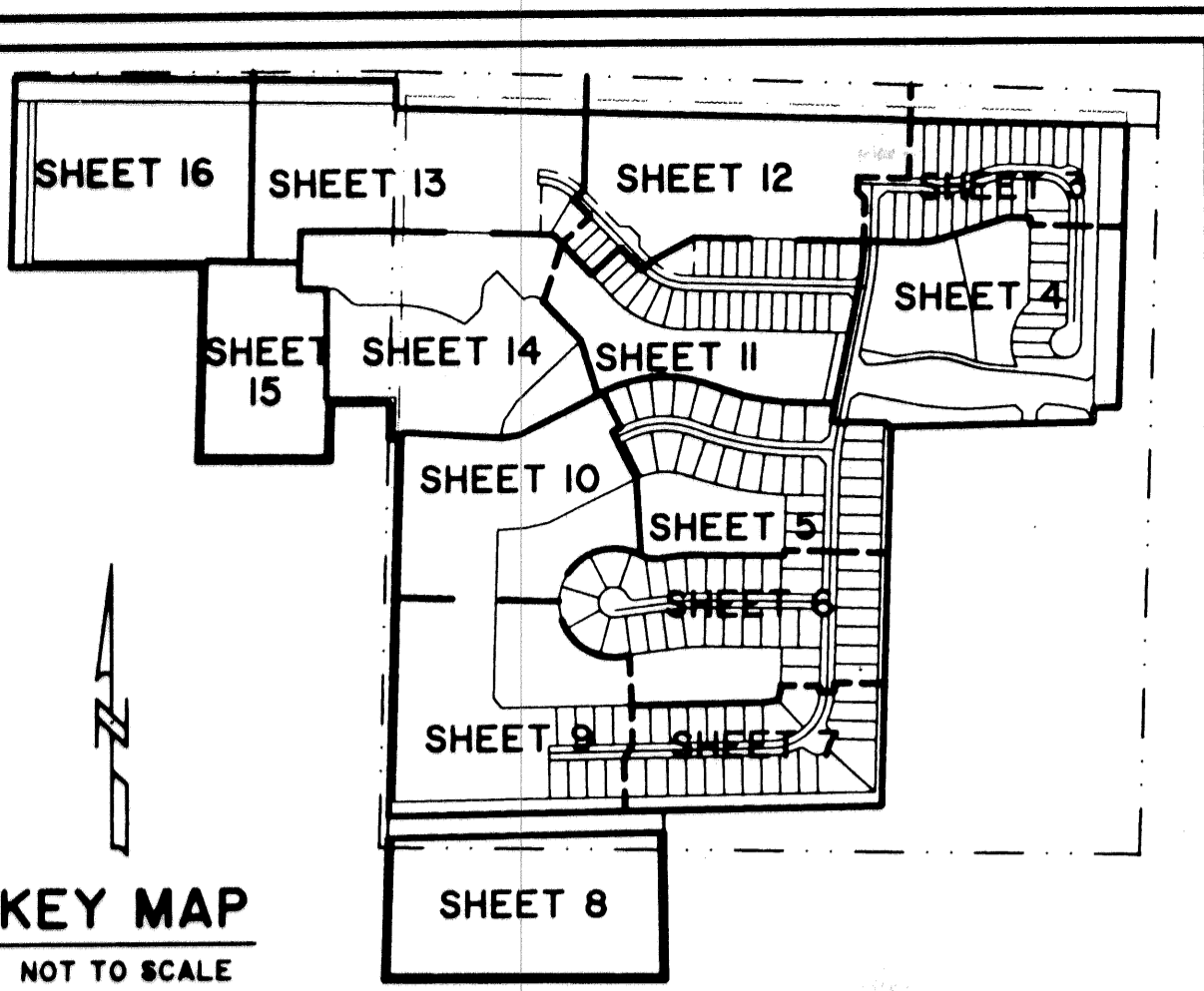


# BELLA TERRA P.U.D. PLAT NO. 1

BEING A REPLAT OF A PORTION OF BLOCK 9, PALM BEACH FARMS COMPANY PLAT NO. 3, AS RECORDED IN PLAT BOOK 2, PAGES 45 THROUGH 54, PUBLIC RECORDS OF PALM BEACH COUNTY, FLORIDA AND A PORTION OF SECTION 36, TOWNSHIP 43 SOUTH RANGE 41 EAST, VILLAGE OF ROYAL PALM BEACH, PALM BEACH COUNTY, FLORIDA.

FEBRUARY, 2002 SHEET 7 OF 16

STATE OF FLORIDA SS  
COUNTY OF PALM BEACH  
THIS PLAT WAS FILED FOR RECORD AT  
M. THIS DAY OF 2002  
AND DULY RECORDED IN PLAT BOOK NO.  
ON PAGE  
DOROTHY H. WILKEN, CLERK OF THE CIRCUIT COURT  
BY D.C.



TRACT 7, BLOCK 9  
PALM BEACH FARMS CO. PLAT NO. 3  
(P.B. 2, PAGES 45 - 54)

**Landmark Surveying & Mapping Inc.**  
1850 Forest Hill Boulevard  
Ph. (561) 433-5405 Suite 100 W.P.B. Florida  
LB # 4396

**BELLA TERRA P.U.D. PLAT NO. 1**